



Light

PACCO S1PS LOW

PACCOS1LOW

Sportive low-cut sneaker type safety shoe with wide-fitting toecap

Light like space, strong like a rock. That is what sums up this lightweight safety shoe the best. PACCO S1P is completely metal free, with a puncture-resistant midsole and a composite wide-fitting toe cap. It also features ESD, a slip-resistant rubber outsole and a breathable upper. Suitable for light applications in dry environments.

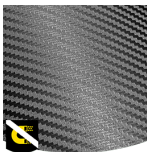
Upper	Synthetic Leather
Lining	Mesh
Footbed	SJ foam footbed
Midsole	Anti-puncture Textile
Outsole	Phylon/Rubber
Toecap	Composite
Category	S1 PS / SR, ESD
Size range	EU 35-48 / UK 3.0-13.0 / US 3.0-13.5 JPN 21.5-31.5 / KOR 230-315
Sample weight	0.470 kg
Norms	ASTM F2413:2018 EN ISO 20345:2022



WHT



BLK



Metal free

Metal free safety shoes are in general lighter than regular safety shoes. They are also very beneficial for professionals who have to pass through metal detectors several times a day.



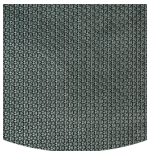
S1P

You work in dry environments, no risk of water/liquid sprays, and you need protection for your toes, protection against perforation, and a good breathability? Then you need S1P safety footwear.



Puncture resistant lightweight

Metal free, super flexible and ultralight puncture resistant midsole. Covers 100% of the bottom area of the last, no thermal conductivity.



Rubber outsole

Rubber outsoles provide versatile functions that make them suitable for many areas of application: excellent cut resistance, heat and cold resistance, high flexibility at cold temperatures, resistance against oil, fuel and many chemicals.



Heel energy absorption

Heel energy absorption reduces the impact of jumps or running on the body of the wearer.

Industries:

Assembly, Automotive, Industry, Logistics

Environments:

Dry environment, Extreme slippery surfaces

Maintenance instructions:

To extend the life of your shoes, we recommend to clean them regularly and to protect them with adequate products. Do not dry your shoes on a radiator, nor nearby a heat source.

	Description	Measure unit	Result	EN ISO 20345
Upper	Synthetic Leather			
	Upper: permeability to water vapor	mg/cm ² /h	1.20	≥ 0.8
	Upper: water vapor coefficient	mg/cm ²	18.50	≥ 15
Lining	Mesh			
	Lining: permeability to water vapor	mg/cm ² /h	34.59	≥ 2
	Lining: water vapor coefficient	mg/cm ²	277	≥ 20
Footbed	SJ foam footbed			
	Footbed: abrasion resistance (dry/wet) (cycles)	cycles	Dry 25600 cycles/Wet 12800 cycles	25600/12800
Outsole	Phylon/Rubber			
	Outsole abrasion resistance (volume loss)	mm ³	129mm ³ (Density:1.16)	≤ 150
	Basic Slip resistance - Ceramic + NaLS - Forward heel slip	friction	0.36	≥ 0.31
	Basic Slip resistance - Ceramic + NaLS - Backward forepart slip	friction	0.44	≥ 0.36
	SR Slip resistance - Ceramic + glycerin - Forward heel slip	friction	0.25	≥ 0.19
	SR Slip resistance - Ceramic + glycerin - Backward forepart slip	friction	0.31	≥ 0.22
	Antistatic value	MegaOhm	53.1	0.1 - 1000
	ESD value	MegaOhm	11	0.1 - 100
	Heel energy absorption	J	25	≥ 20
Toecap	Composite			
	Impact resistance toecap (clearance after impact 100J)	mm	NA	N/A
	Compression resistance toecap (clearance after compression 10kN)	mm	NA	N/A
	Impact resistance toecap (clearance after impact 200J)	mm	15	≥ 14
	Compression resistance toecap (clearance after compression 15kN)	mm	17	≥ 14

Sample size: 42

Our shoes are constantly evolving, the technical data above may change. All product names and brand Safety Jogger, are registered and may not be used or reproduced in any format, without written consent from us.