



Light

## ECODESERT S1P MID

### ECODESERT

ECODESERT is crafted with a breathable recycled upper, offering more made from less. This mid-cut boot provides reliable protection in dry environments, with features such as a steel toe cap, steel puncture-resistant midsole and a slip-resistant outsole. ECODESERT offers a wide fitting, antistatic properties & heel energy absorption.

Upper	recycled canvas
Lining	recycled canvas
Footbed	SJ foam footbed
Midsole	Steel
Outsole	PU/PU
Toecap	Steel
Category	S1 P / SR, FO
Size range	EU 35-48 / UK 3.0-13.0 / US 3.0-13.5 JPN 21.5-31.5 / KOR 230-315
Sample weight	0.662 kg
Norms	ASTM F2413:2018 EN ISO 20345:2022



AH6



BLK

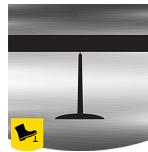


KHA



#### SRC slip resistance

Slip resistant soles are one of the most important features of safety and occupational footwear. SRC slip resistant soles pass both SRA and SRB slip resistant tests, they are tested on both steel and ceramic surfaces.



#### Steel midsole

Puncture resistant steel midsoles are made from stainless or coated steel and prevent sharp objects from penetrating the outsole.



#### Steel toecap

Robust metal support to protect the feet of the wearer against falling or rolling objects.



#### Antistatic

Antistatic footwear prevents build-up of static electrical charges and ensures that they are discharged effectively. Volume resistance between 100 KiloOhm and 1 GigaOhm

**Industries:**

Automotive, Construction, Industry, Logistics

**Environments:**

Uneven surfaces, Dry environment

**Maintenance instructions:**

To extend the life of your shoes, we recommend to clean them regularly and to protect them with adequate products. Do not dry your shoes on a radiator, nor nearby a heat source.

	Description	Measure unit	Result	EN ISO 20345
<b>Upper</b>	<b>recycled canvas</b>			
	Upper: permeability to water vapor	mg/cm <sup>2</sup> /h	7.1	≥ 0.8
	Upper: water vapor coefficient	mg/cm <sup>2</sup>	57.5	≥ 15
<b>Lining</b>	<b>recycled canvas</b>			
	Lining: permeability to water vapor	mg/cm <sup>2</sup> /h	10.7	≥ 2
	Lining: water vapor coefficient	mg/cm <sup>2</sup>	87.8	≥ 20
<b>Footbed</b>	<b>SJ foam footbed</b>			
	Footbed: abrasion resistance (dry/wet) (cycles)	cycles	Dry 25600 cycles/Wet 12800 cycles	25600/12800
<b>Outsole</b>	<b>PU/PU</b>			
	Outsole abrasion resistance (volume loss)	mm <sup>3</sup>	Relative volume loss:0.9g/ cm <sup>3</sup> (Density:0.98)	≤ 150
	Basic Slip resistance - Ceramic + NaLS - Forward heel slip	friction	0.48	≥ 0.31
	Basic Slip resistance - Ceramic + NaLS - Backward forepart slip	friction	0.49	≥ 0.36
	SR Slip resistance - Ceramic + glycerin - Forward heel slip	friction	0.21	≥ 0.19
	SR Slip resistance - Ceramic + glycerin - Backward forepart slip	friction	0.24	≥ 0.22
	Antistatic value	MegaOhm	26.5	0.1 - 1000
	ESD value	MegaOhm	N/A	0.1 - 100
	Heel energy absorption	J	40	≥ 20
<b>Toecap</b>	<b>Steel</b>			
	Impact resistance toecap (clearance after impact 100J)	mm	N/A	N/A
	Compression resistance toecap (clearance after compression 10kN)	mm	N/A	N/A
	Impact resistance toecap (clearance after impact 200J)	mm	17.5	≥ 14
	Compression resistance toecap (clearance after compression 15kN)	mm	23.0	≥ 14

Sample size: 42

Our shoes are constantly evolving, the technical data above may change. All product names and brand Safety Jogger, are registered and may not be used or reproduced in any format, without written consent from us.